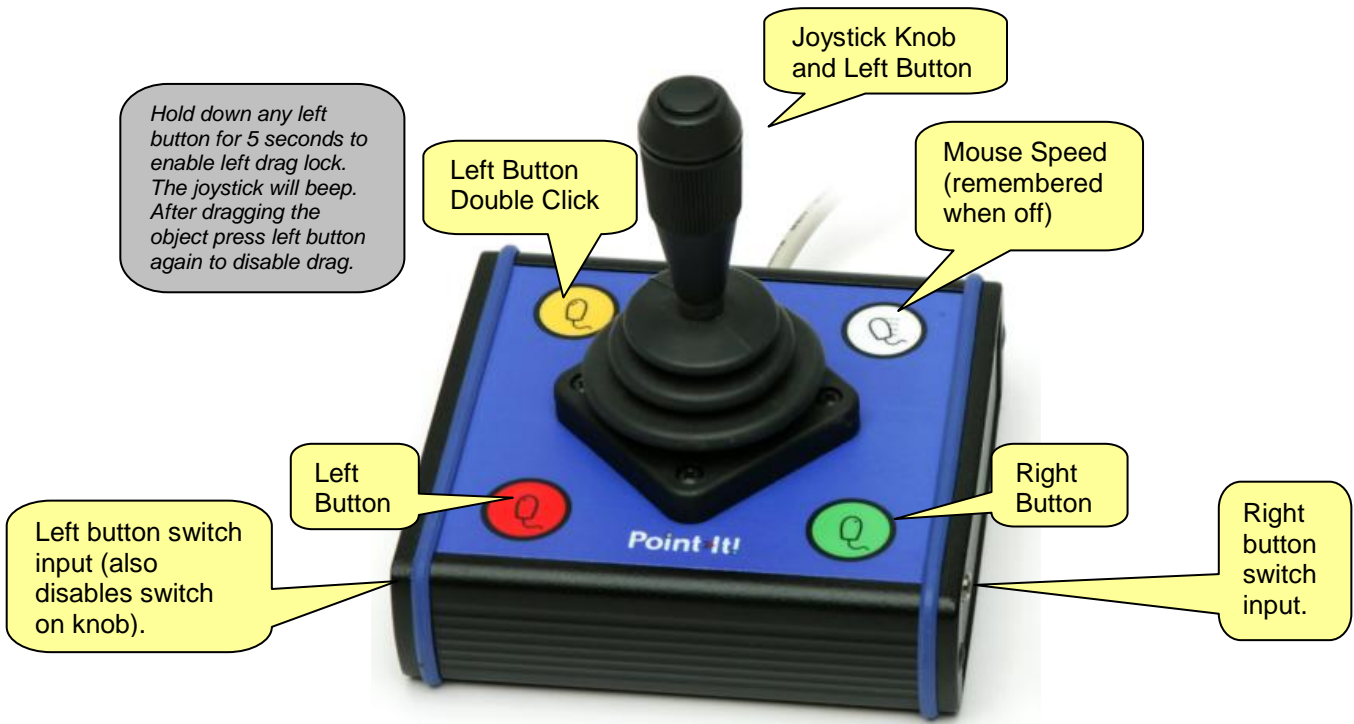


## Quick Guide

---



## New options and improvements to the Point-It! joystick

### Light Action Version

A light action version of the joystick is now available requiring only 250grams of pressure for a full scale deflection of the joystick compared to the 550grams of pressure for the standard joystick.



### Knob Options

A range of new knob alternatives are now available for the Point-It! joystick including Chin, Sponge, Carrot, DX, Wrist plate, T-Bar and more.

*These knobs are only inter-changeable with the Ball Knob version of the Point-It! joystick.*



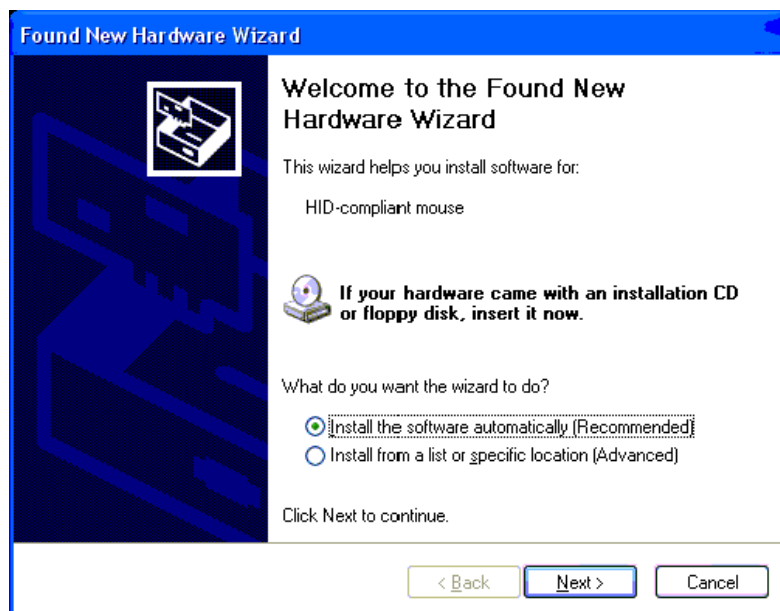
## ORDER CODES

#301-USB	Point-It! USB Joystick
#301-BALL-USB	Point-It! USB Joystick with interchangeable ball knob
#301-USB-L	Point-It! USB Light Action Joystick
#301-BALL-USB-L	Point-It! USB Light Action Joystick with interchangeable ball knob
K-Ca	Carrot Knob
K-Q	Dynamic Knob
K-Ch	Chin Knob
K-Sp	Sponge Knob
K-Tbar	T bar
K-Wr	Wrist Plate

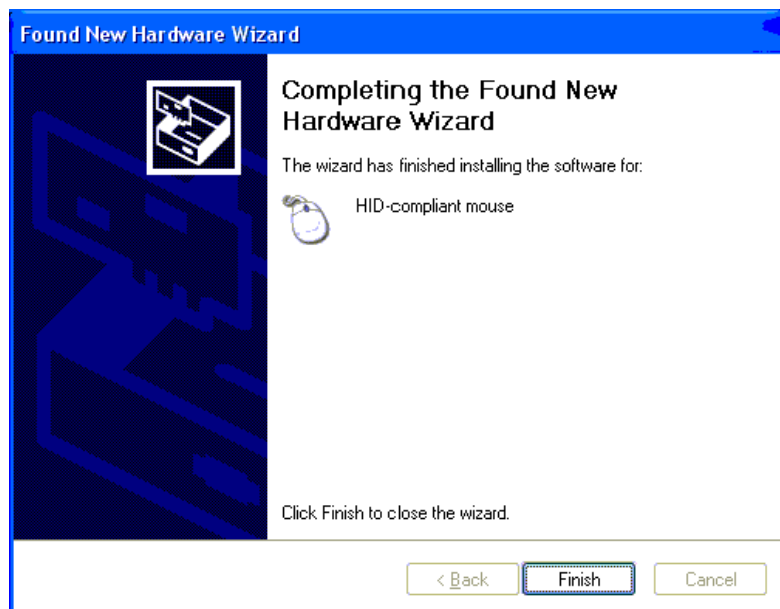
*PS2 versions are still available by replacing "USB" with "PS2" in the order code.*

## Point-It! USB Hardware Installation – Windows XP

Windows will automatically detect when you plug the Point-It joystick into the USB port of your computer. If the Human Interface Device driver necessary to run USB pointing devices is not installed then Windows will run the “Found New Hardware Wizard”



Click on “Install the software automatically” and then click “Next”. Windows will automatically install the Human Interface Device (HID) driver.



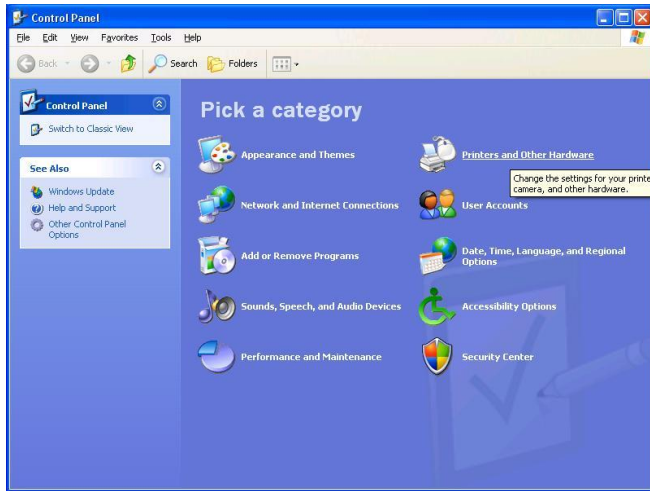
Click “Finish” to finish installing the driver. The Point-It! Joystick is now ready for use.

## Point-It! USB Mouse Properties – Windows XP

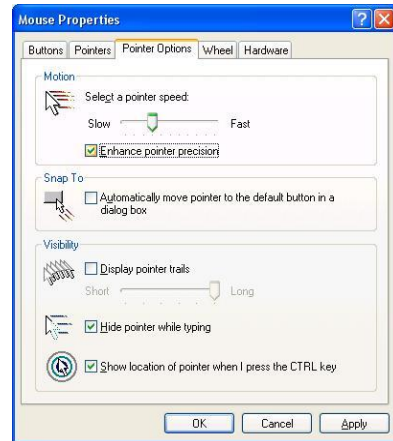
In Windows XP Microsoft have introduced the “Enhance pointer precision” option in Mouse Properties. However, to get the smoothest response from your Point-It! joystick this option should be disabled.

### To disable the “Enhance pointer precision” option

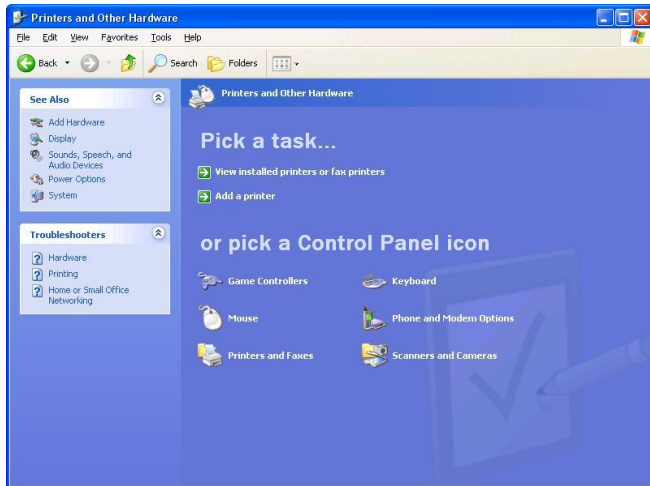
1. From the “Start” menu choose “Control Panel” and then click on “Printers and Other Hardware”.



3. Click on the “Pointer Options” tab.



2. Click on “Mouse”.



4. Click on the “Enhance pointer precision” checkbox to disable this option and then click “OK”.

