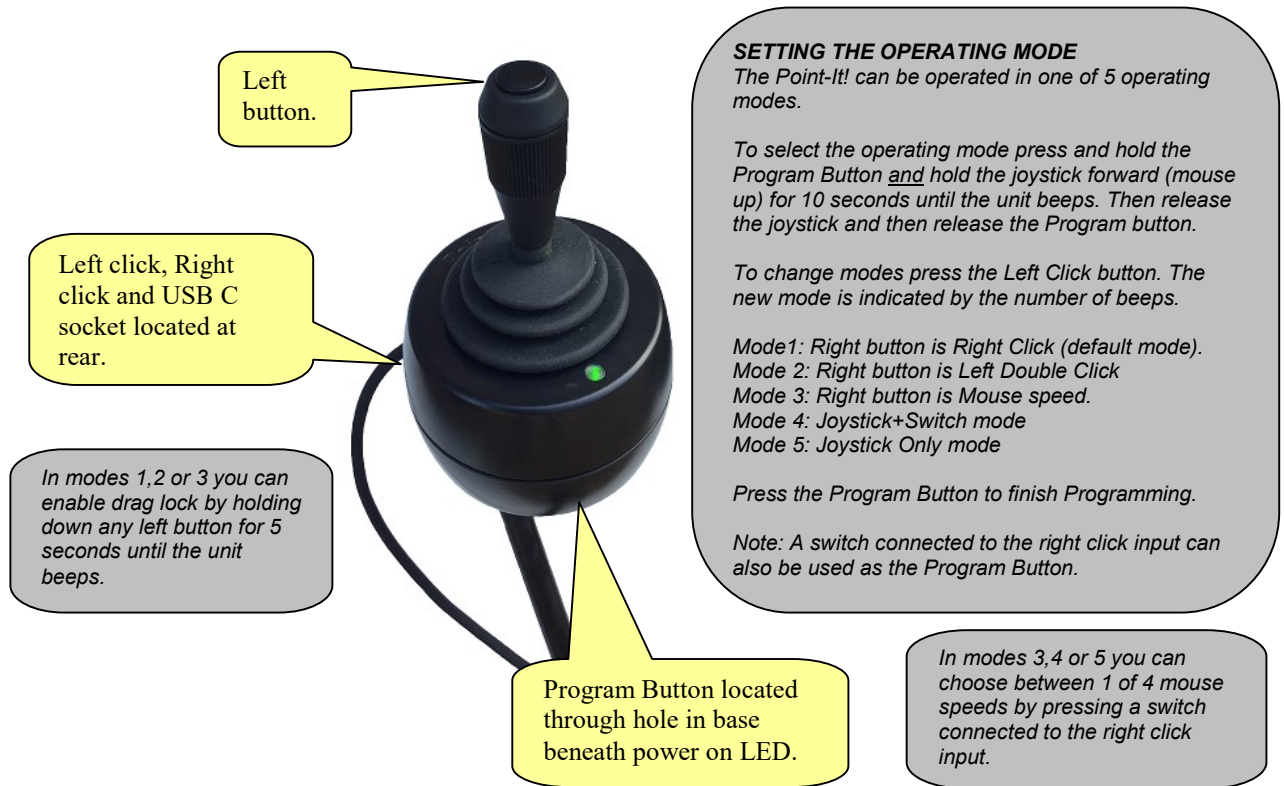


Quick Guide



ADVANCED MODES 4 and 5
 In “**Joystick+Switch**” mode pressing the left button begins selection of a mouse button action. Then, rather than moving the mouse pointer, the next movement of the joystick makes a mouse button action. A left movement for left click, a right movement for right click, a forward movement for a double click and a backwards movement for a left drag lock.
 In “**Joystick Only**” mode all mouse button actions can be selected without ever pressing a button. For a left click the joystick is “flicked” to the left. For a right click the joystick is “flicked” to the right. For a double click the joystick is “flicked” forward and for a drag lock the joystick is “flicked” backwards.

The full Point-It! manual is available in electronic format as PDF at <http://housemate.ie/downloads/>

ORDER CODES

PRO-USB	Point-It! Pro USB Joystick Standard with Switch
PRO-USB-BALL	Point-It! Pro USB Joystick Ball Knob
PRO-RING	Point-It! Pro ring for switch mounting
PRO-SWITCH-x	Twister Switch (Specify color with “x”).
PRO-MOUNT	Point-It! Adapter Plate for L3D system.
K-Ca	Carrot Knob
K-Q	Dynamic Knob
K-Ch	Chin Knob

Accessories, Mounting & Knobs

Accessories

The Point-It! Pro can be supplied with a switch mounting ring which can accept two Mo-Vis “Twister Switches”. The ring can rotate around the body of the joystick and the switches can be fixed at any height. This allows for total 3D control over positioning.



Mounting

The Point-It! Pro can be mounted to Rehadapt’s Light 3D system using the an adapter plate. The position of the two M4 nuts located in the base of the unit match those of a standard Buddy Button.



The unit can also be mounted to a desktop or tray. Ensure that any mounting screws insert no more than 6mm into the base of the device.

Knob Options

A range of knob alternatives are available for the Point-It! joystick including Chin, Carrot, and Dynamic.

Note: An alternative knob can only be fitted to the Ball Knob version of the Point-t! The standard knob with the switch on top cannot be removed because of the wiring to the switch.



Point-It! USB Hardware Installation – Windows

Windows will automatically detect when you plug the Point-It joystick into the USB port of your computer. If the Human Interface Device driver necessary to run USB pointing devices is not installed then Windows will run the “Found New Hardware Wizard”



Click on “Install the software automatically” and then click “Next”. Windows will automatically install the Human Interface Device (HID) driver.



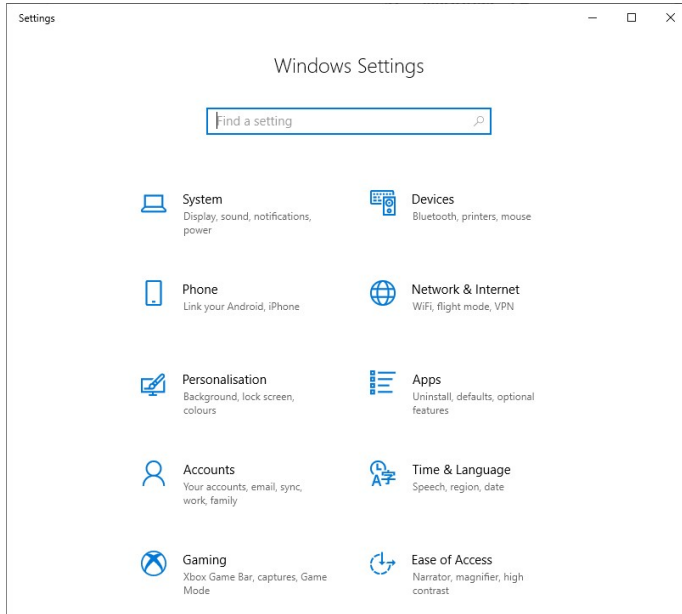
Click “Finish” to finish installing the driver. The Point-It! Joystick is now ready for use.

Point-It! USB Mouse Properties – Windows

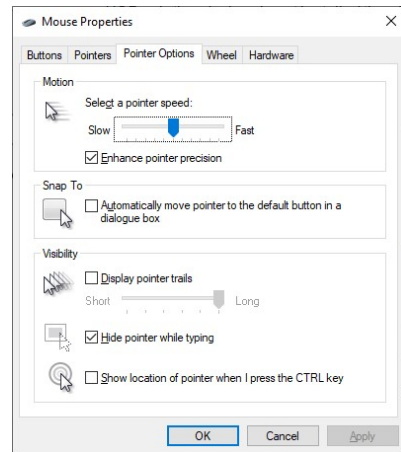
In Windows Microsoft have introduced the “Enhance pointer precision” option in Mouse Properties. However, to get the smoothest response from your Point-It! joystick this option should be disabled.

To disable the “Enhance pointer precision” option

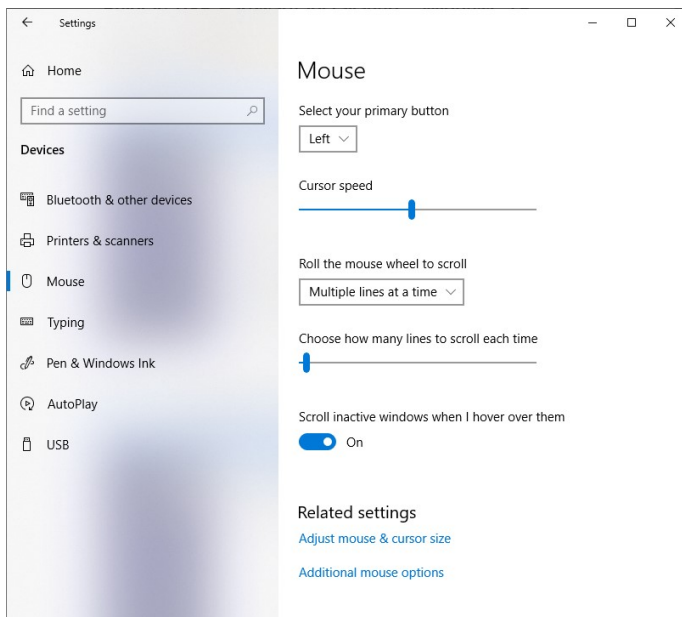
1. From the “Start” menu choose “Settings” and then click on “Devices”.



3. Click on the “Pointer Options” tab.



2. Click on “Mouse” and then choose “Additional mouse options”.



4. Click on the “Enhance pointer precision” checkbox to disable this option and then click “OK”.

