

# Point-It!



## Point-It! Pro

### USB/HID Compatible Pointing Device

#### Features:-

- A compact USB/HID compatible joystick which gives accurate proportional control of a mouse pointer.
- Supports standard mouse button functions plus DoubleClick, DragLock and MouseSpeed.
- 3.5mm jack sockets for connection of external switches for left/right button control.
- Three different knobs available, one with a switch on top for left button activation.
- Can be located close to a user or fitted to standard mounting systems.
- USB and Bluetooth

#### Important Notes:

1. Read this manual carefully before installing or operating your Point-It!.
2. Due to continuous product improvement Unique Perspectives reserves the right to update this Manual. This Manual supersedes all previous issues which must not continue to be used.
3. Any attempt to gain access to or in any way abuse the electronic components of the Point-It! renders the manufacturer's warranty void and the Manufacturer free from liability.

## Contents

---

	Page
1. Introduction	3
2. Specifications	4
3. Installation	5
4. Operation	7
5. Connections	9
6. Maintenance	10
7. Safety and Misuse warnings	11
8. Warranty	12
9. Sales and Service Information	13
10. CE Marking	14

# 1 Introduction

---

## Point-It!

Point-It! is a compact USB/HID compatible joystick for use as an alternative to a mouse input. It gives smooth accurate proportional control of a mouse pointer. This small unobtrusive unit can be located close to a user or operated on a desktop. In addition it has fixings in its base so that it can be attached to a Universal Mounting System and positioned effectively for chin control.

The joystick is a professional non-contacting type as found on powered wheelchairs and is available with different knob options including ball, chin, T-bar and sponge.

3.5mm jack sockets allow connection of standard switches to control the left and right click functions. A switch located at the top of the standard knob version also operates the left button. Drag-Lock feature allows a user to drag without having to keep the left button pressed.

## 2 Specifications

---

### Electrical

Power Supply	5V 500ma DC
Quiescent Current	50mA
Battery (HID version)	300mAh Li-Polymer 3.7v

### Mechanical

Weight	Approx. 500grams
Case material	ABS.

### Environmental

	Min	Max	Units
Operating ambient temperature range	-25	50	°C
Storage temperature range	-25	70	°C
Operating and storage humidity	0	90	%RH

The Point-It is not designed for outdoor use.

### Intended Use

The Point-It is a USB/HID compatible assistive device designed as an alternative to a standard mouse control. It compensates for poor hand function due to injury, impairment or disability by enabling a person to control a computer or smart device for the purposes of education, communication and/or environmental control.

The Point-It! is for indoor use only.

The Point-It ! can be connected to a PC/MAC/Android or iOS device.

## 3 Installation

---

### Connecting to your device

#### USB version

The Point-It! is supplied with a USB type C cable. Connect this to your PC or MAC and confirm that the green LED illuminates. You should also hear the unit beep.



#### HID version

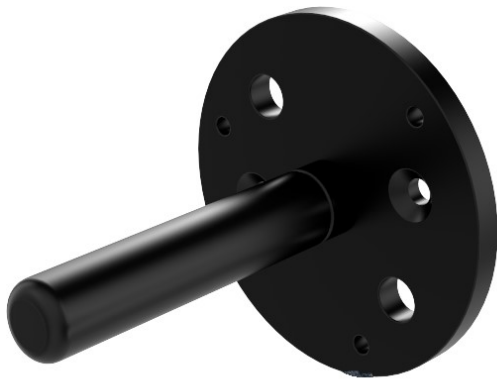
The Bluetooth version of Point-It! can be paired with a PC/MAC/Android or iOS device. Go to Settings on your device and click on the Scan button. When turned on, the Point-It! should appear as a standard Human Interface Device (HID). Follow the pairing procedure for your target device.

Once paired the blue LED on Point-It! should stop flashing and come on steady.

## Mounting

If necessary, the Point-It! can be mounted with a suitable mounting kit using M4 screws. The choice and construction of the mount will depend upon the user's needs. Suitable mounting plates and brackets are available from [www.rehadapt.com](http://www.rehadapt.com).

Rehadapt L3D GA mounting plate



Rehadapt TC L3D mounting system



**Warning !!** For safe installation, select a screw length between 6mm and 10mm to attach the Point-It! to the mounting plate.

## Switches

The Point-It! can be supplied with Mo-Vis “Twister” switches ([www.mo-vis.com](http://www.mo-vis.com)) and a rotatable mounting ring as shown below. Together these accessories enable you to position a switch in almost any position. Loosen the mounting ring with the Allen key provided to rotate the ring about the body of the Point-It! or to raise, lower or rotate the switch.



## 4 Operation

---



### Moving the Mouse

- To move the mouse pointer up the screen push the joystick knob forward.
- To move the mouse pointer down the screen pull the joystick knob back.
- To move the mouse pointer to the left, deflect the joystick knob to the left.
- To move the mouse pointer to the right, deflect the joystick knob to the right.

### Left & Right Click

- To make a Left click press the switch connected to the left switch input.
- To make a Right click press the switch connected to the right switch input.
- To enable drag lock, press and hold the left switch until Point-It! Beeps, about 4 seconds. Now the left click is held down. You can remove your finger and drag objects around the screen using the joystick. To stop dragging press the left switch again.

#### **NOTE:**

1. The Left Mouse Button is also controlled by the button located at the top of the joystick (standard knob only).

2. You can disable the button at the top of the joystick knob by inserting a 3.5mm plug into the left mouse button socket.

**TIP:** For users with gross motor movements set the pointer speed on the target device to the slowest possible and allow the user to use the full deflection of the Joystick. The joystick contains a diamond shaped restrictor plate that helps a user locate the stick in one of four directions and hold it there.

### **Knob Options**

A range of knob alternatives are available for the Point-It! joystick including Chin, Sponge, Carrot, DX, Wrist plate, T-Bar and more.

These knobs are only inter-changeable with the Ball Knob version of the Point-It! joystick.





## 5 Connections

---

### Mouse Button Switches

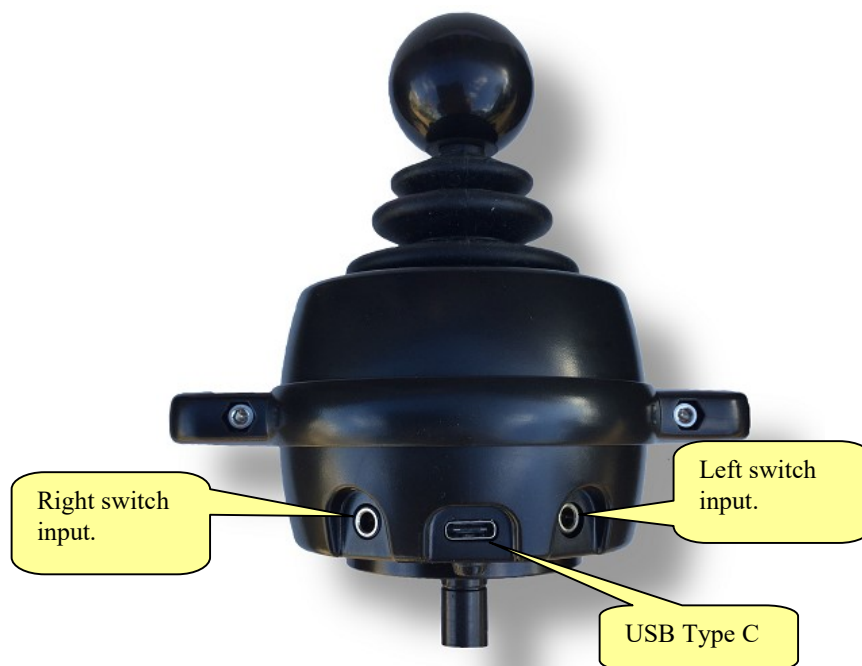
If a user cannot operate the button at the top of the standard Point-It! you can connect an external switch. These connectors are standard 3.5mm jack sockets located at the back of the unit. The socket on the left operates the Left button, the socket on the right operates the Right button.

**Note:** When you insert a switch into the left socket the button at the top of the joystick is disabled.

### USB

The USB Cable is a standard USB Type C and is connected to the USB port of your computer.

The USB port on the Bluetooth version is for charging purposes only.



---

**Note:** You must specify when ordering whether you require a USB or Bluetooth version.

---

## 6 Maintenance

---

The Point-It ! should be regularly checked for integrity. Loose, damaged or corroded connectors or terminals, or damaged cabling should be reported to your Service Centre and be replaced immediately.

The USB cable of Point-It ! should be regularly checked for integrity.

The Lithium battery, if fitted, should be regularly checked for corrosion or leakage. Occasionally remove the cover and check for leakages, corrosion and evidence of over-heating.

If you are not using your Point-It! for an extended period disconnect the battery if fitted.

All switches connected to the Point-It ! should be regularly tested to ensure that they function correctly.

The Point-It ! should be kept free of dust, dirt and liquids. If necessary wipe with a cloth dampened with warm water or alcohol. **Do not** use solvents or abrasive cleaners.

Where any doubt exists, consult your nearest Service Centre or Agent.

There are no user-serviceable parts within the Point-It !. Do not attempt to open the case except to inspect or disconnect the battery, if fitted.

In accordance with the requirements of CE marking of this device and the Company's policy, it is requested that re-occurring faults or defects be reported back to Unique Perspectives Ltd.

---

**Warning !!** If the Point-It ! is damaged in any way, or if internal damage may have occurred (for example by being dropped), have it checked by qualified personnel before operating.

---

## 7 Safety and Misuse Warnings

---

Do not install, maintain or operate the Point-It ! without reading, understanding and following the proper instructions and manuals, otherwise injury or damage may result.

Do not operate the Point-It ! if it behaves erratically, or shows abnormal response, heating, smoke or arcing. Turn the unit off, disconnect all cables, disconnect the battery, if fitted, and consult your service agent.

Ensure the Point-It ! is turned off when not in use and never leave the Point-It ! and associated PC or MAC switched on or plugged into the mains unattended or overnight.

No connector pins should be touched, as contamination or damage due to electrostatic discharge may result.

Point-It is not designed to resist water penetration. If a spillage occurs Turn the unit off, disconnect all cables, and consult your service agent. Once turned off any spillage over the Point-It ! should be wiped dry without delay. The Point-It ! may not be used outdoors.

Most electronic equipment is influenced by Radio Frequency Interference (RFI). Caution should be exercised with regard to the use of portable communications equipment in the area around such equipment. While the manufacturer has made every effort to ensure that RFI does not cause problems, very strong signals could still cause a problem.

Report any malfunctions immediately to your Service Agent.

## 8 Warranty

---

All equipment supplied by Unique Perspectives Ltd. is warranted by the company to be free from faulty materials or workmanship. If any defect is found within the warranty period of 12 months, the company will repair the equipment, or at its discretion, replace the equipment without charge for materials and labor.

The warranty is subject to the conditions that the equipment:

- Has been used solely in accordance with this manual.
- Has not been subjected to misuse or accident, or been modified or repaired by any person other than someone authorised by Unique Perspectives Ltd.
- Has been used solely for the use of alternative mouse input.

## 9 Sales and Service Information

---

For Sales and Service advice, or in case of any difficulty, please contact:

Unique Perspectives Ltd.  
Ballyclovan  
Callan  
Kilkenny  
Ireland

Telephone: +353 56 7725913

WEB: [www.housemate.ie](http://www.housemate.ie)  
EMAIL: [info@housemate.ie](mailto:info@housemate.ie)

**NOTE:** The Point-It! should be clearly labeled with the manufacturer's service agent's telephone number.

## 10 CE Marking

---

Point-It! is marketed as a technical aid for people with disabilities and satisfies the requirements of Medical Devices Regulation MDR 2017/745.

Point-It! is classified as a Class 1 medical device.

The following international standards have been applied:

EN ISO 14971 – Medical devices – Application of risk management to medical devices.

MEDDEV 2.7.1 – Guidelines on Medical Devices / Clinical Evaluation: A guide for manufacturers and Notified Bodies

EN ISO 13485 – Medical device – Quality management system – Requirements for regulatory purposes

EN60601-1-2: 2011

EN 55016-2-3 (2010) & A1 (2010) - Emissions

EN61000-4-2 (2009) – Electrostatic discharge

EN61000-4-3 (2006) – Immunity

R&TTE Directive 1999/5/EC

